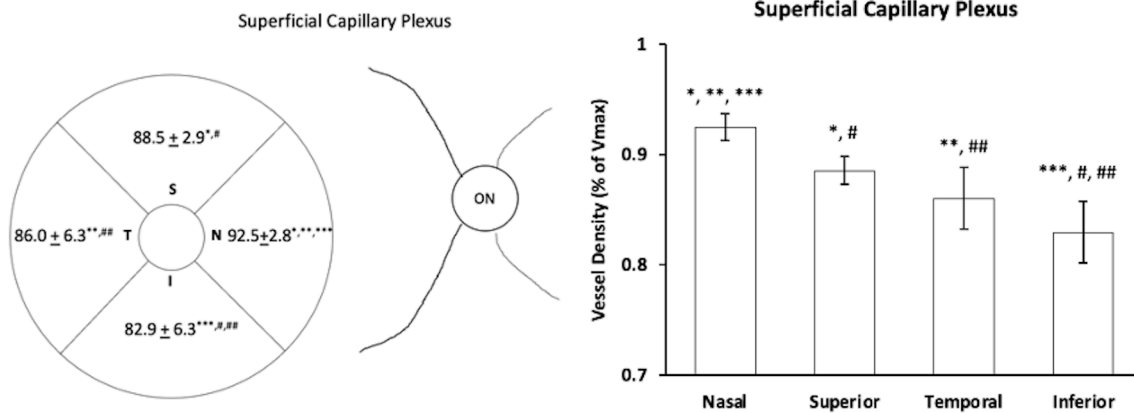
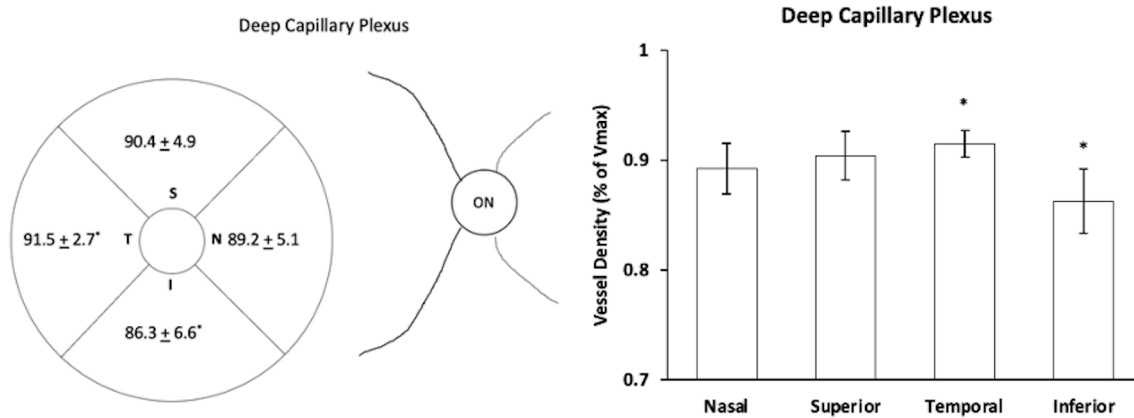


A



B



Supplemental Figure S2. Quadrant analysis from radius 500-1250 microns. Vessel density of quadrants on skeletonized, binarized images for the (A) superficial capillary plexus and (B) deep capillary plexus. (Left) The average vessel density (%) ± standard deviation is reported for each quadrant. (Right) The average vessel density (%) with a 95% confidence interval is reported for each quadrant.

N=nasal, S=superior, T=temporal, I=inferior; ON = Optic Nerve; Vmax = Max vessel density.

Symbols indicate statistically significant difference ($P < 0.05$) between the means.