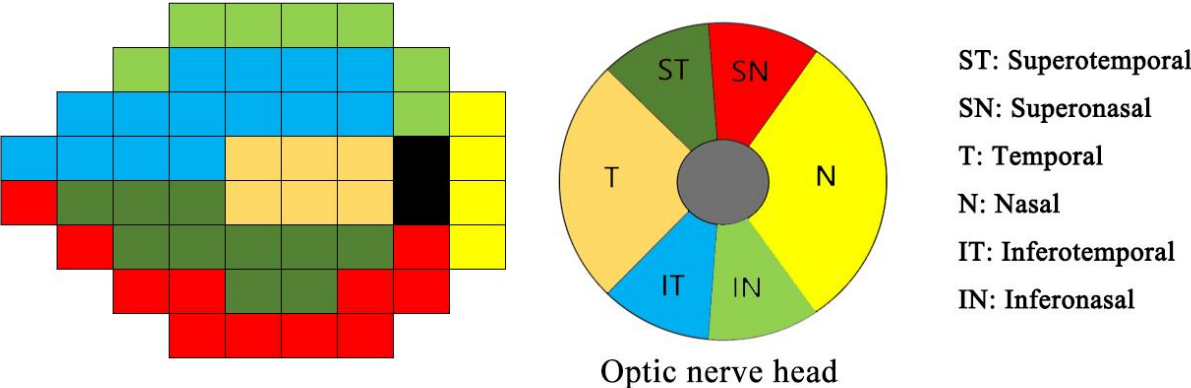
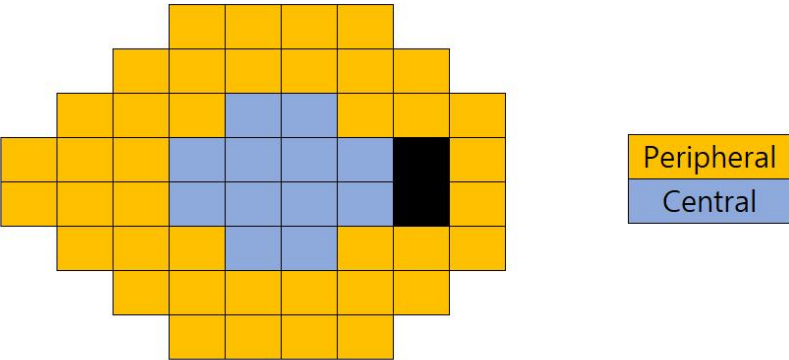


**Supplementary Figure S1. Visual field sectorization**

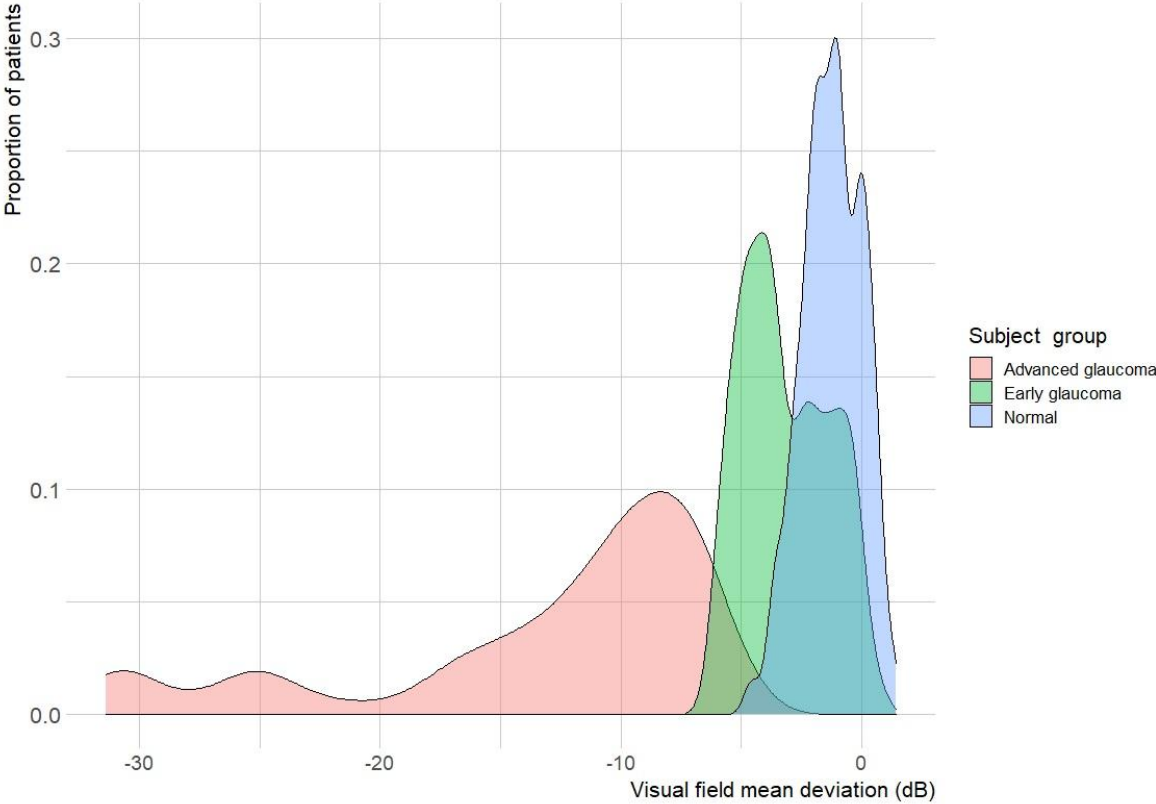
**(A) Garway-Heath sectorization**



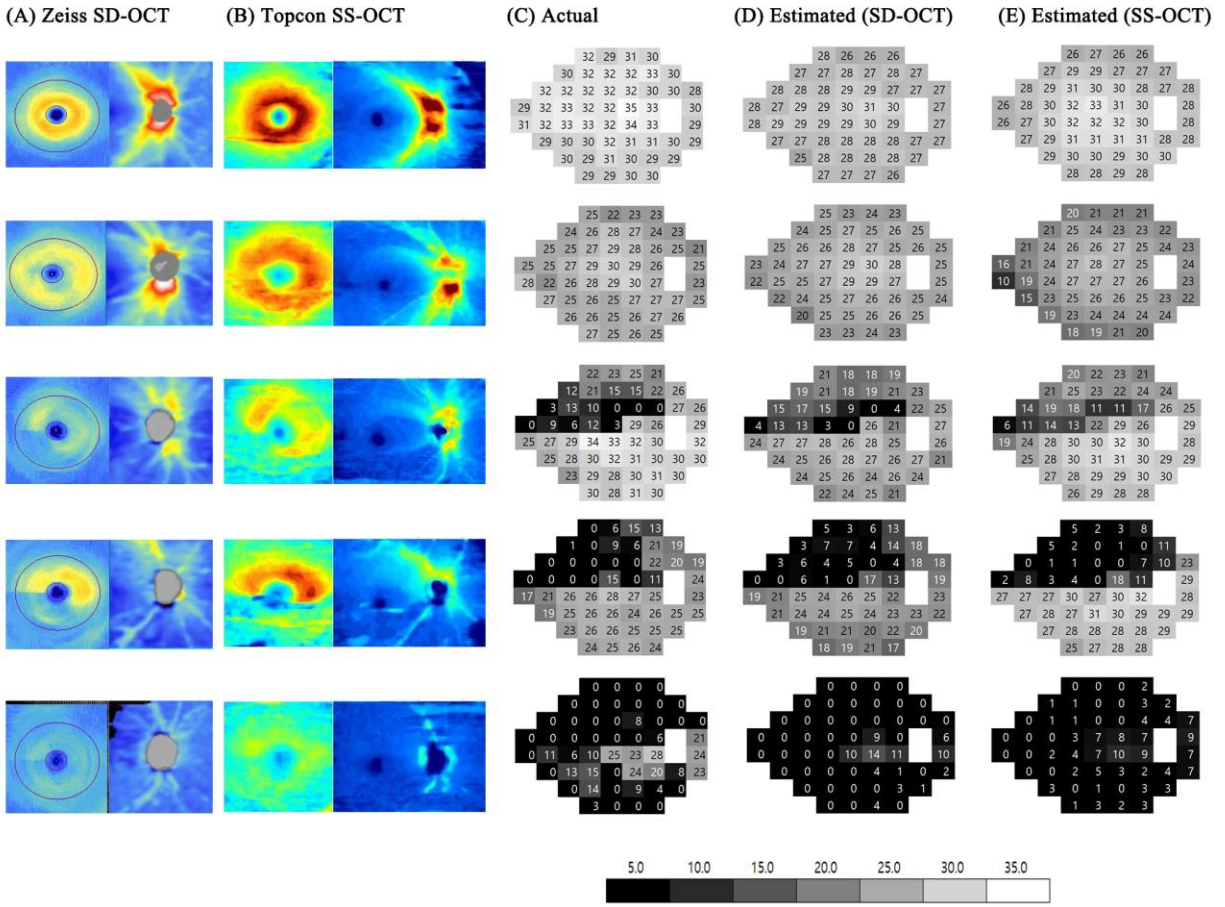
**(B) Central and peripheral sectorization**



**Supplementary Figure S2.** Visual field mean deviation distribution plot



### Supplementary Figure S3. Representative case examples



**Supplementary Table S1.** Mean absolute difference of visual field total threshold value in test dataset.

	<b>Number of patients<sup>*</sup></b> <b>(included / total)</b>	<b>Total deviation difference<sup>†</sup></b> <b>(mean ± SD)</b>
<b>All subjects</b>	126/ 243	4.28 ± 1.94 dB
<b>Normal subjects</b>	35/ 86	3.27 ± 1.07 dB
<b>Early glaucoma</b>	48/ 87	3.87 ± 1.48 dB
<b>Advanced glaucoma</b>	43/ 70	5.56 ± 2.27 dB

\* This refers to the number of patients who underwent two consecutive visual field examinations within 6 months. As not all patients in the test set received two examinations, the numbers of both included and total patients are presented.

† The mean absolute difference in visual field total threshold values between the two consecutive examinations of the same patients.

SD: standard deviation.