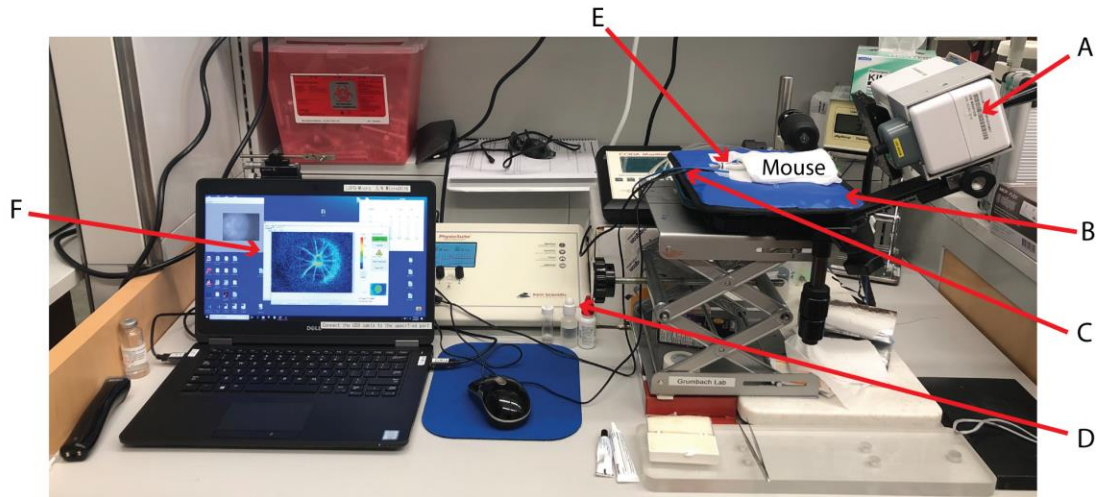


Supplementary Figure 1



Supplementary Figure 1: LSFG-Micro workstation.

The LSFG-Micro camera (A) is positioned to image the mouse eye. A mouse (under the gauze pad) is positioned on an infrared heating pad (B) controlled by a rectal temperature probe (C). The temperature is regulated by a PhysioSuite module system (Kent Scientific, D). During the imaging procedure, BP is recorded using a tail-cuff blood pressure monitor (Coda Monitor, Kent Scientific, E). Image acquisition is controlled by the LSFG software (F).