

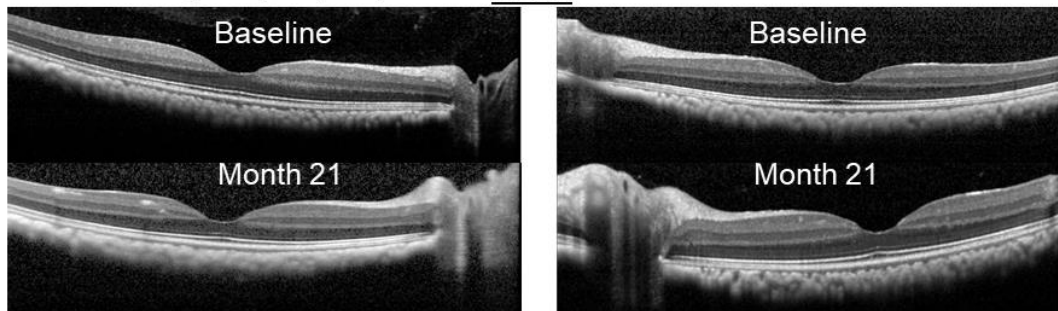
A

ADVM-022 treated animals

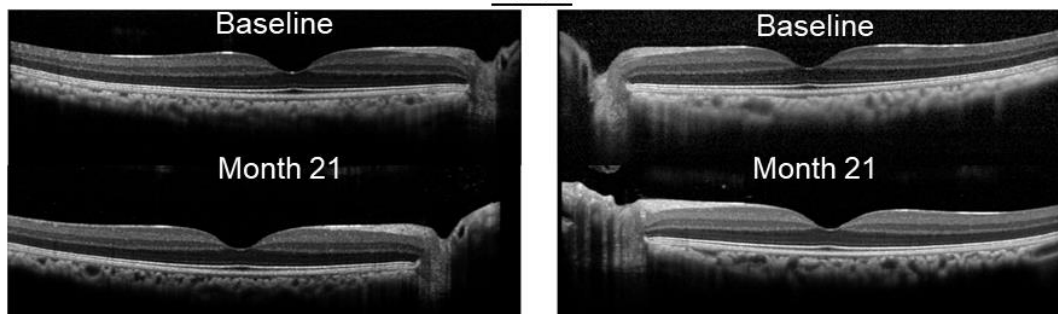
Right eye (OD)

A055

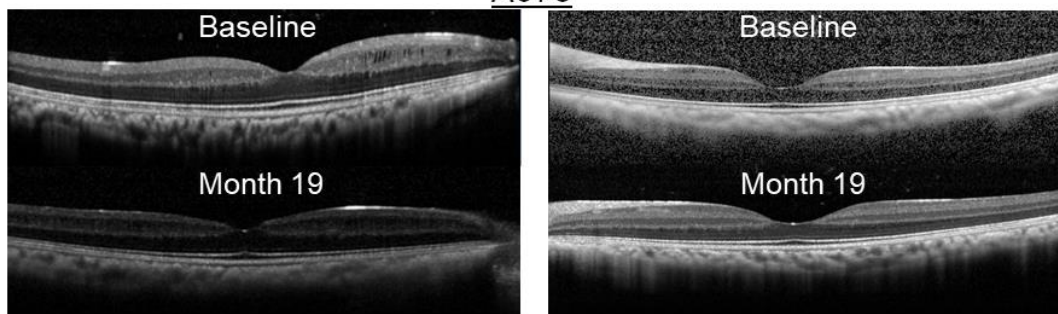
Left eye (OS)



A070



A075

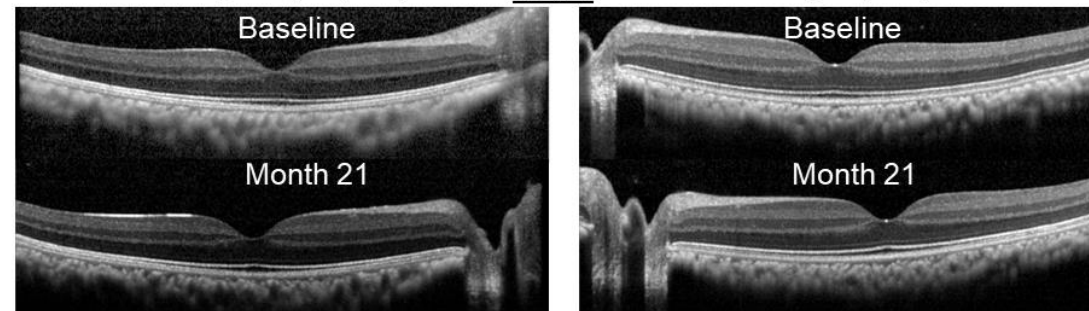
**B**

Vehicle treated animals

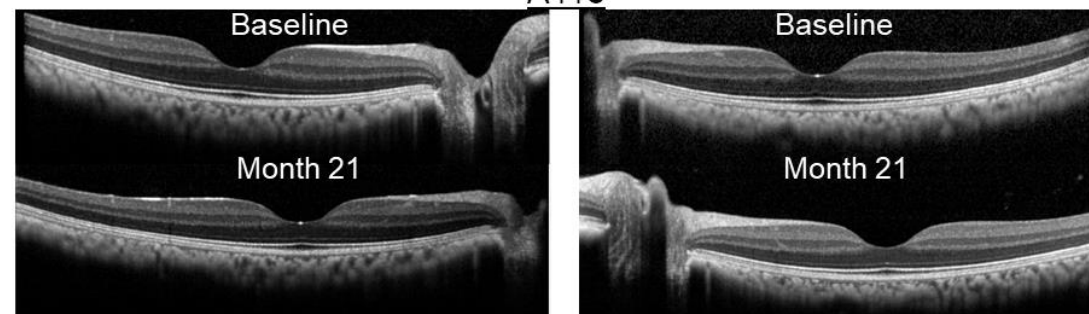
Right eye (OD)

A194

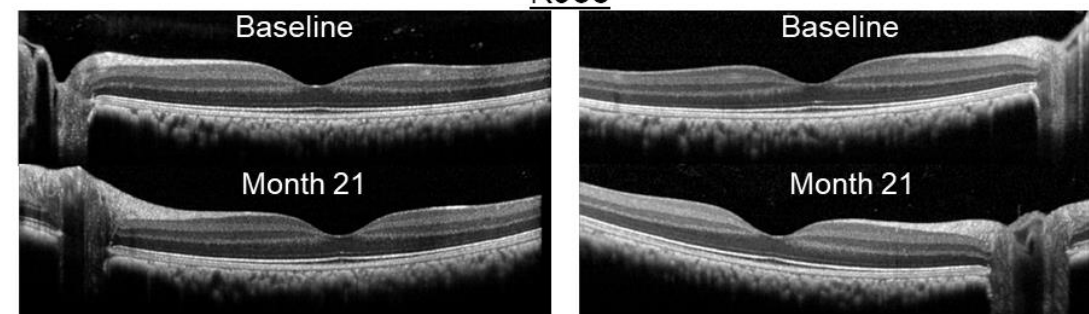
Left eye (OD)



A118



K938



Supplemental Figure S3. Long-term expression of aflibercept in the retina from ADVM-022 treated animals does not affect retinal morphology features as evaluated by the OCT. OCT images of both eyes from the animals treated with (A) ADVM-022 or (B) vehicle; at baseline and indicated time post treatment.