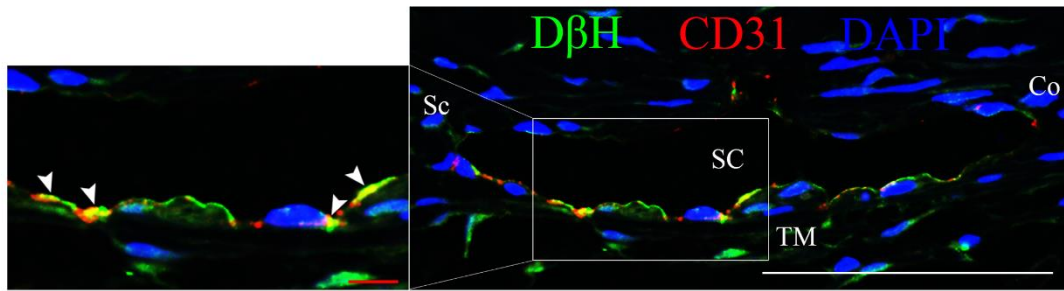


## Supplementary figure 1



Supplementary figure 1. Immunolocalization of D $\beta$ H in the region of rats' SC.

Representative image of immunofluorescence staining showing positive D $\beta$ H and CD31 expression at SC, and there was multiple co-labeling between D $\beta$ H and CD31.

CD31: PECAM1. SC: Schlemm's canal, TM: trabecular meshwork, Ir: iris, Co: cornea, Sc: sclera. Green: D $\beta$ H; Red: CD31; Blue: DAPI for nuclear staining. White scale bars: 50  $\mu$ m, red scale bars: 5  $\mu$ m. Arrowheads: positive D $\beta$ H and CD31 co-expression.