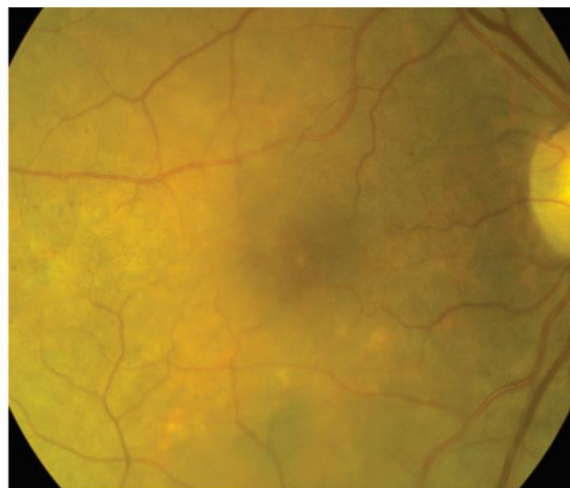


(a)



(b)

Supplementary Figure 2: Examples of the association between DL prediction of CST, actual CST, and presence of hard exudates based on the holdout set. Figure S2(A) shows a case where there is presence of hard exudates, actual CST that is low (178), and a predicted CST of <250 . Figure S2(B) shows a case where there is a lack of hard exudates in the macula, actual CST of 288, and a predicted CST of ≥ 250 . These counterexamples indicate that the DL models are not just capturing the information “is there presence of exudates within the macula or not?” to quantify the presence of macular thickening on CFPs.