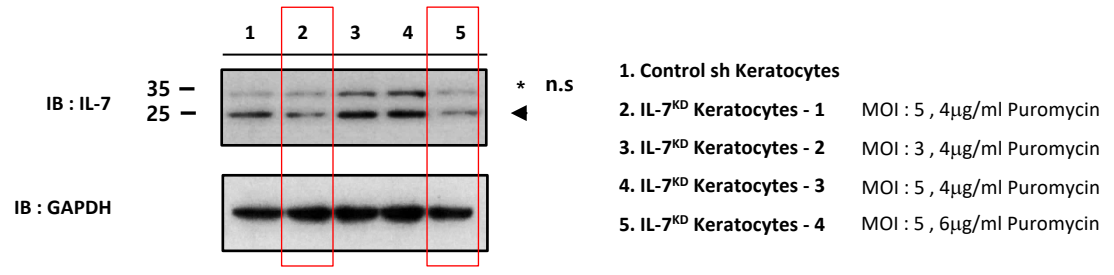
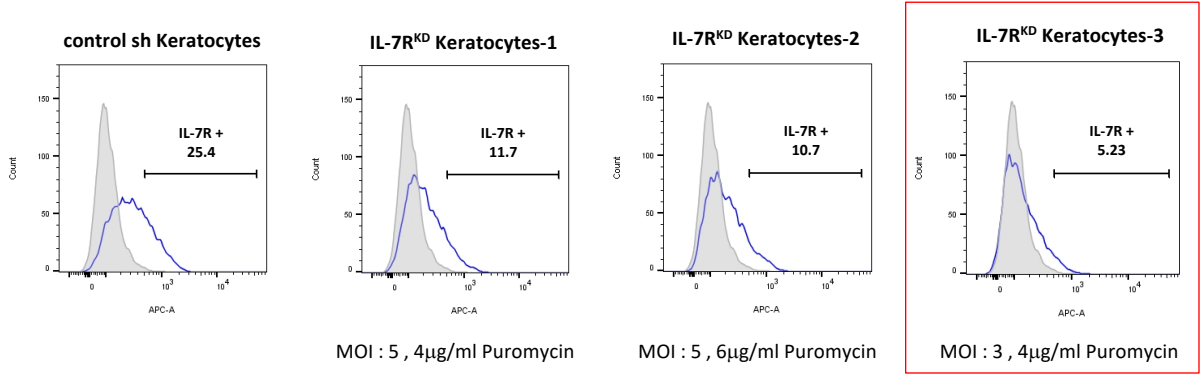


a IL-7 knockdown stable cells (WT Keratocytes) using shRNA Lentiviral particles



b IL-7R knockdown stable cells (WT Keratocytes) using shRNA Lentiviral particles



Supplementary Figure 2. Control, IL-7, and IL-7R knockdown stable cells (WT keratocytes) using shRNA Lentiviral particles.

Supplementary Figure 2. Control, IL-7, and IL-7R knockdown stable cells in WT keratocytes using shRNA lentiviral particles. Control keratocytes generated using control shRNA lentiviral particles, IL-7 knockdown (KD) keratocytes generated using IL-7 shRNA lentiviral particles (IL-7^{KD} keratocytes), and IL-7R α KD keratocytes generated using IL-7R α shRNA lentiviral particles (IL-7R α ^{KD} keratocytes) were cultured in puromycin-containing (4 to 6 μ g/mL) medium for 2 weeks to select stable clones. **(A)** The IL-7 knockdown efficacy was examined by immunoblotting. **(B)** The IL-7R knockdown efficacy was examined by flow cytometry.