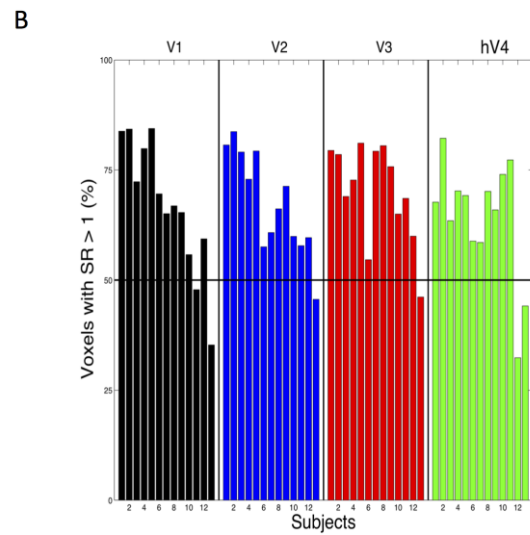
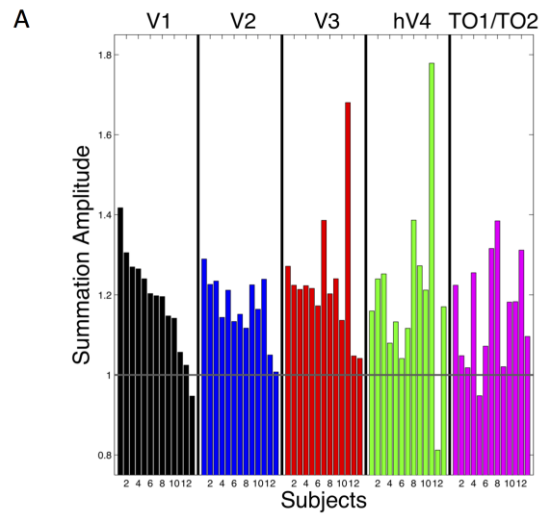


Supplementary materials:



Supplementary figure 1. Summation ratio consistency across and within participants. Subjects are sorted from high to low amplitude summation ratio in V1. This subject order is applied to each brain area. **(A)** Across-subject consistency: subjects almost consistently have amplitude summation ratios larger than one. **(B)** Within-subject consistency: plotted are percentages of voxels with summation ratios higher than 1 for voxels that were commonly measured across all three conditions.