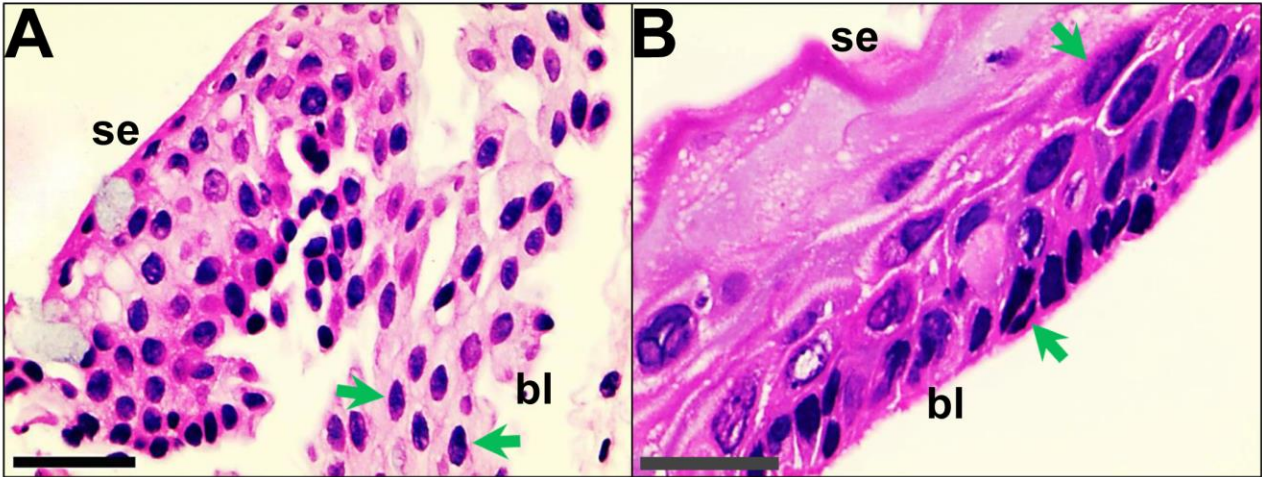


# Supplementary Figure 1A-B



**Supplementary Figure 1.** Typical pterygium epithelial cells (PECs) in two different patients. Staining with H&E illustrated that the PECs with oval-shapes (green arrows in A and B) were presented in basal layer of the epithelium in advancing regions of the head of pterygium. H&E, hematoxylin and eosin; se, superficial epithelium. bl, basal layer. Scale bar: 40  $\mu\text{m}$ .