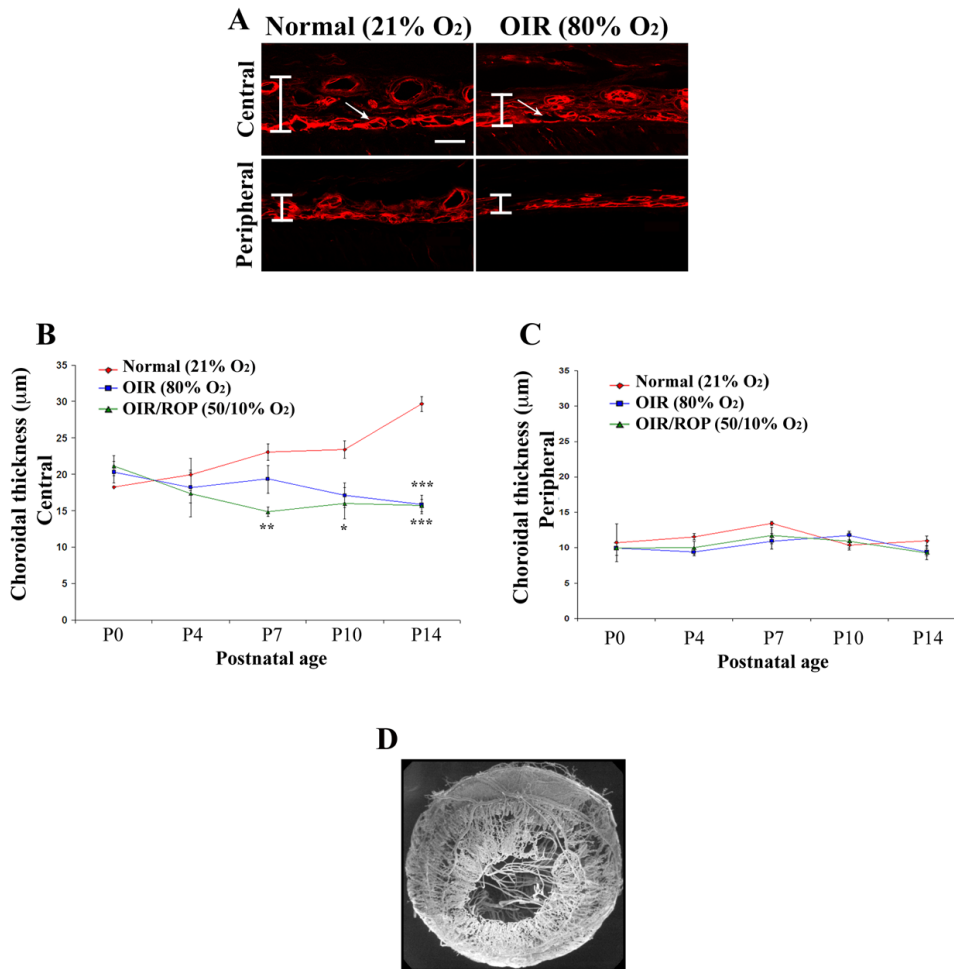


## Supplemental Figure 2



Supplemental Figure 2. Choroidal involution in animals subjected to OIR. (A) Confocal microscopy images used to assess choroidal thickness in controls and OIR. Arrows point to the choriocapillary layer and vertical bar represents the average choroidal thickness. Scale bar: 20  $\mu\text{m}$ . (B&C) Quantification of choroidal thickness during the first two postnatal weeks in room air, and in OIR and OIR/ROP models. Values are mean  $\pm$  SEM of 4-6 experiments per group; \* $p < 0.05$ , \*\* $p < 0.01$ , \*\*\* $p < 0.001$  compared to corresponding age-matched normal control animals (two way ANOVA). (D) Scanning electron microscopy picture of total ocular vasculature system; only samples with complete iris perfusion were considered in the analysis for the choriocapillary vascular area.