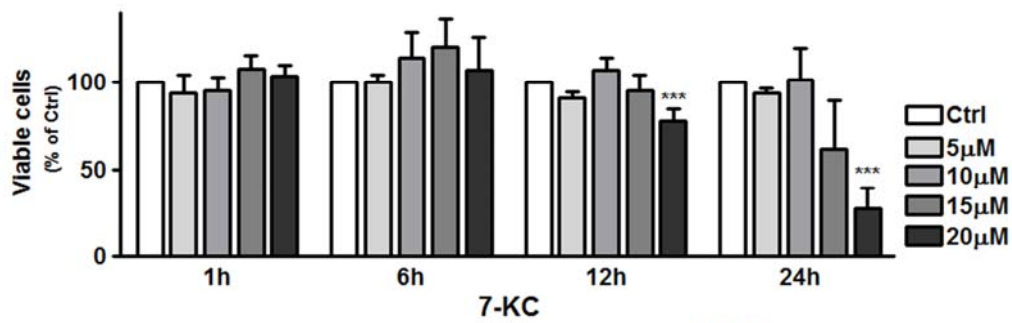
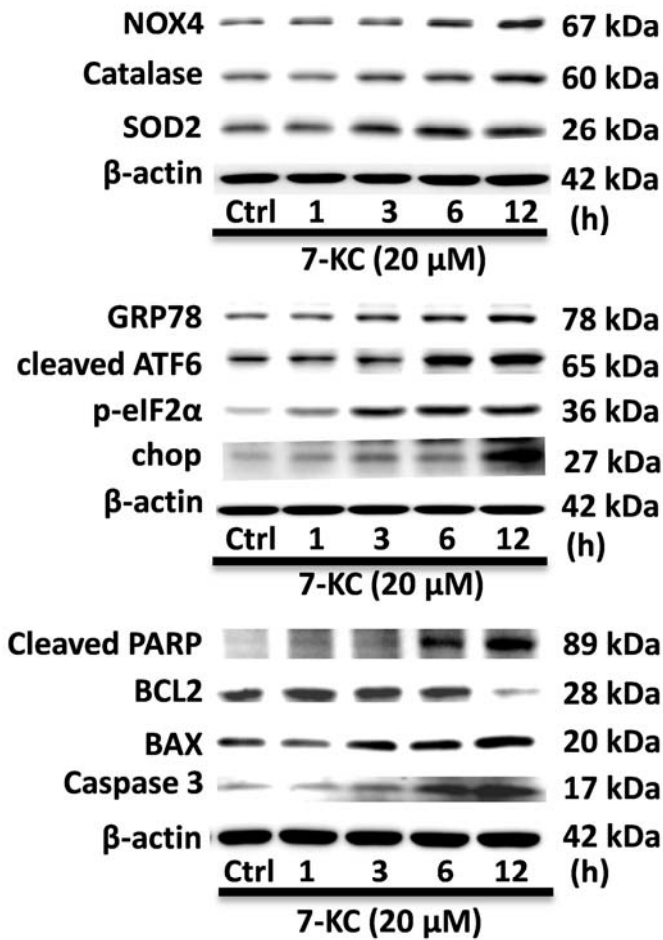


Supplemental Figure 1

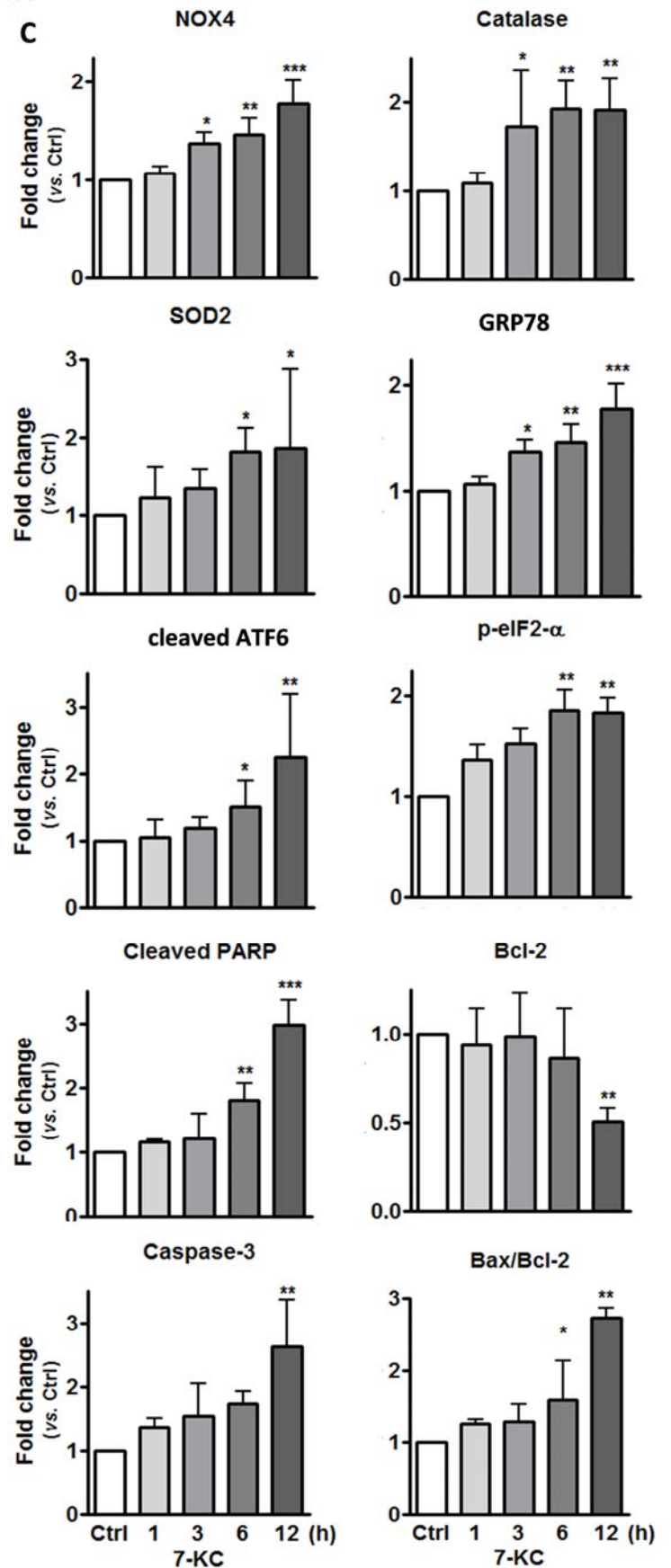
A



B

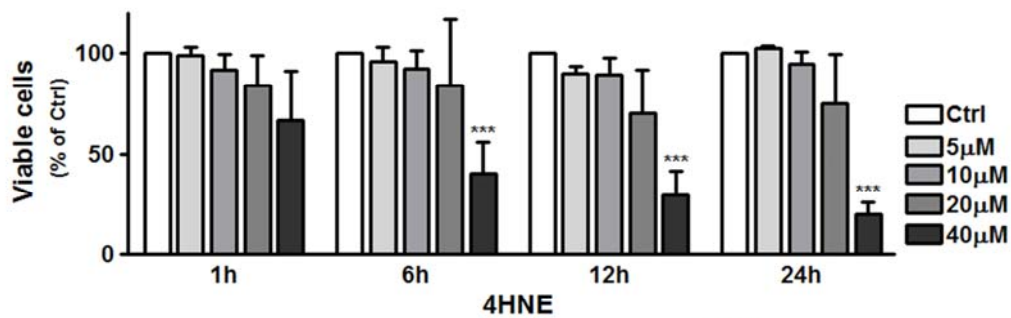


C

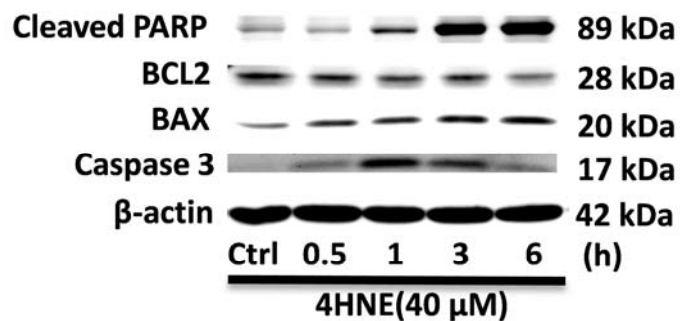
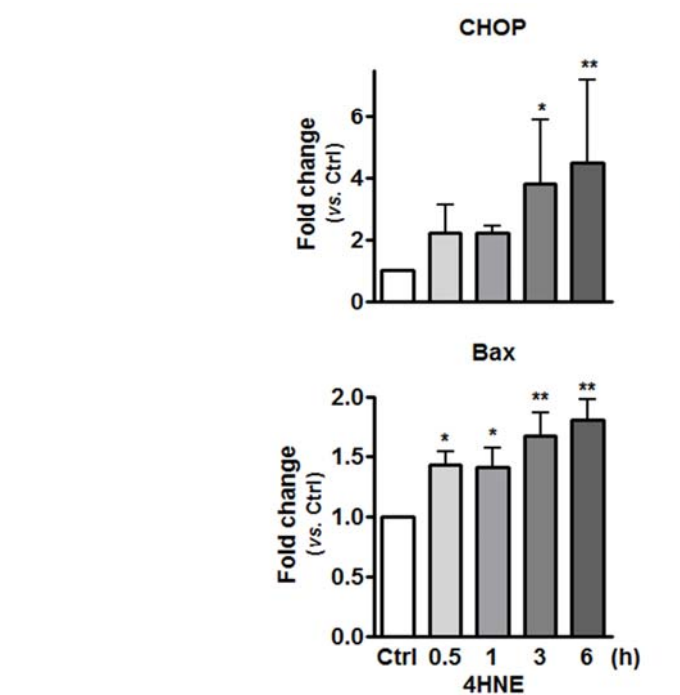
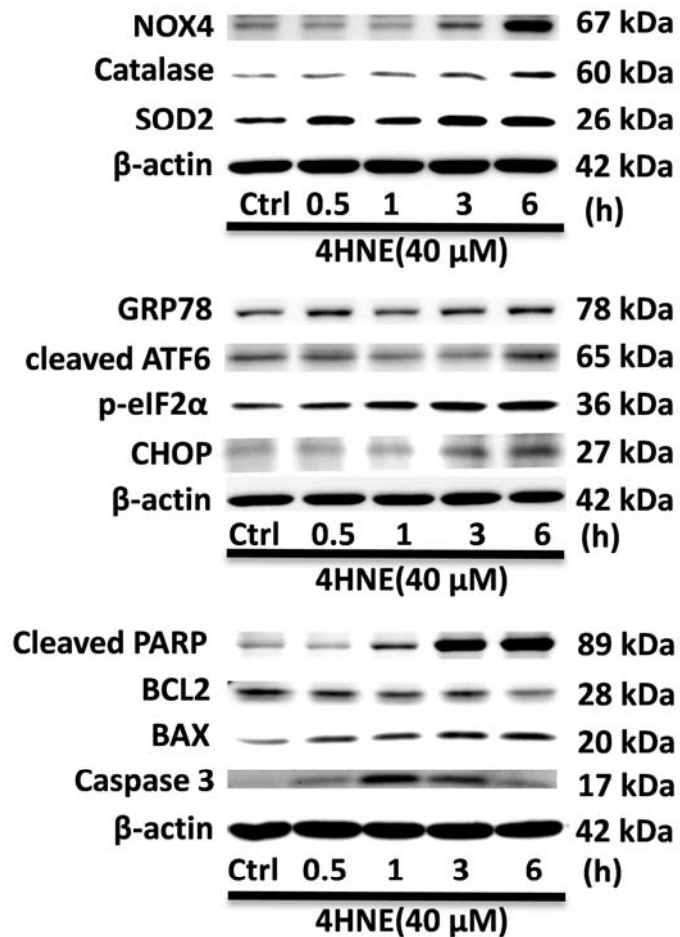


Supplemental Figure 2

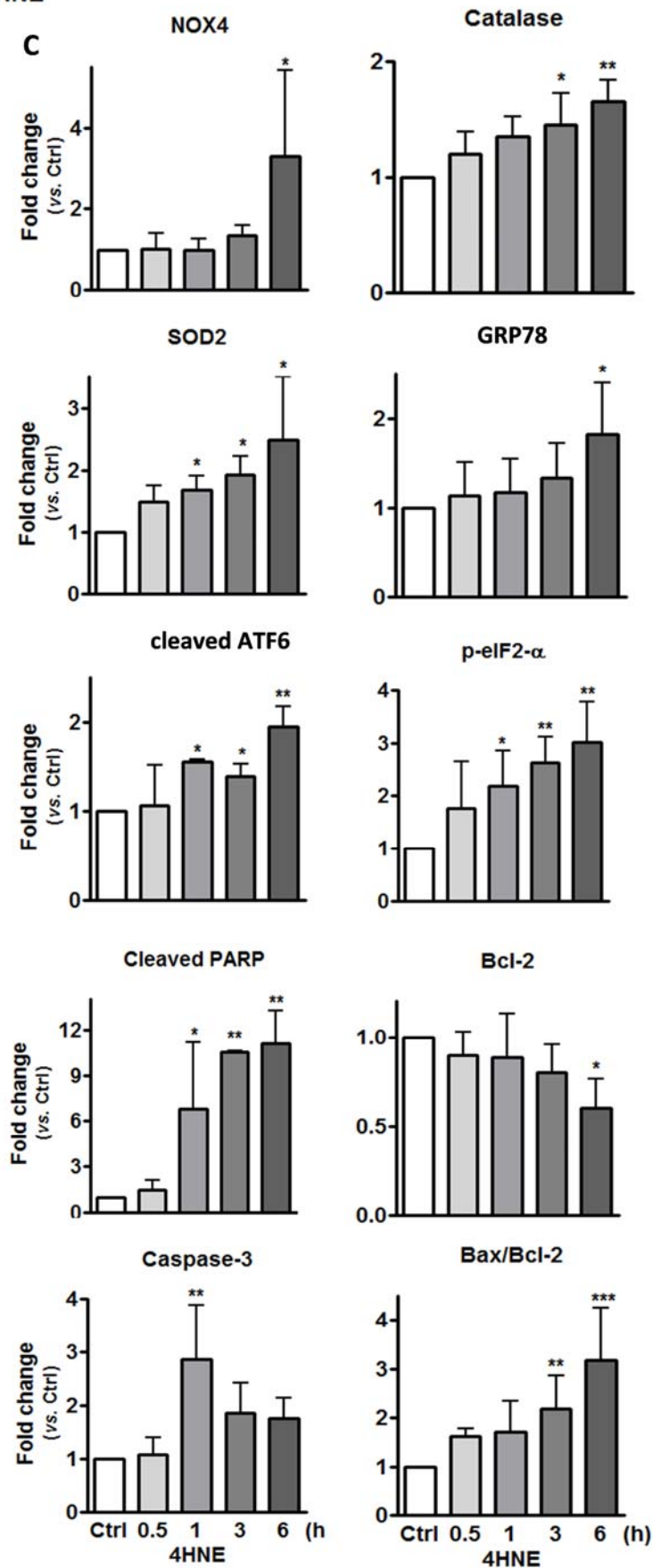
A



B



C



SUPPLEMENTAL FIGURE 1. Effects of 7-KC on human retinal Müller cells. **(A)** 7-KC decreased cell viability (CCK-8) in dose- and time-dependent manners (n=3; mean ± SD; *** $p < 0.001$ vs. control). **(B)** Representative western blots showing that 20µM 7-KC induces oxidative stress, ER stress, and apoptosis in human retinal Müller cells in a time-dependent manner (1-12h). **(C)** Western blot densitometry data from three experiments employing 7-KC (20µM, exposure ranging 1 -12 h as indicated) showing time-courses of responses reflecting oxidative stress, ER stress, and apoptosis (means ± SD; n=3; * $p < 0.05$; ** $p < 0.01$; *** $p < 0.001$, vs. control).

SUPPLEMENTAL FIGURE 2. Effects of 4-HNE on human retinal Müller cells. **(A)** 4-HNE decreased cell viability (CCK-8) in dose- and time-dependent manners in human retinal Müller cells (n=3; mean ± SD; *** $p < 0.001$ vs. control). **(B)** Representative western blots showing that 40µM 4-HNE induces oxidative stress, ER stress, and apoptosis in human retinal Müller cells in a time-dependent manner (0.5 – 6h). **(C)** Western blot densitometry data from three experiments employing 4-HNE (40µM, for times ranging 0.5 -6 h as indicated) showing time-courses of responses reflecting oxidative stress, ER stress, and apoptosis (means ± SD; n=3; * $p < 0.05$; ** $p < 0.01$; *** $p < 0.001$, vs. control).