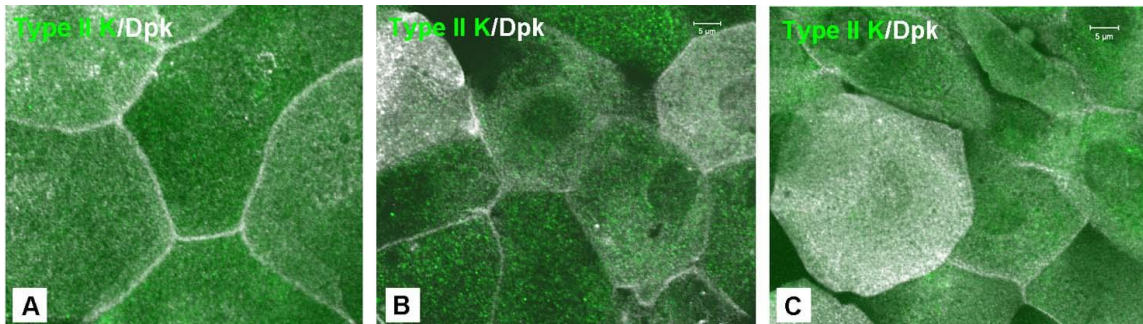


**Supplementary Figure S2: Keratin and desmoplakin structures in squamous corneal epithelial cells.**



(A) In superficial cells of unwounded wild-type (WT) corneal epithelia (n = 15 eyes), type II keratins (Type II K) did not form obvious structures, but desmoplakin (Dpk) aggregated at the cell junctions and weakly in the cell bodies. (B) Staining of type II keratins (green) and desmoplakin (white) on *Pax6*<sup>+/-</sup> corneas (n = 16 eyes) showed that desmoplakin only partially localized to the cell junctions. (C) After healing *in vivo* for 21 hours (n = 8 eyes), no overt changes in type II keratin were seen, but partial redistribution of desmoplakin proteins away from cell borders were observed associated with gaps occurring between the WT cells. Scale bars: 5 μm.