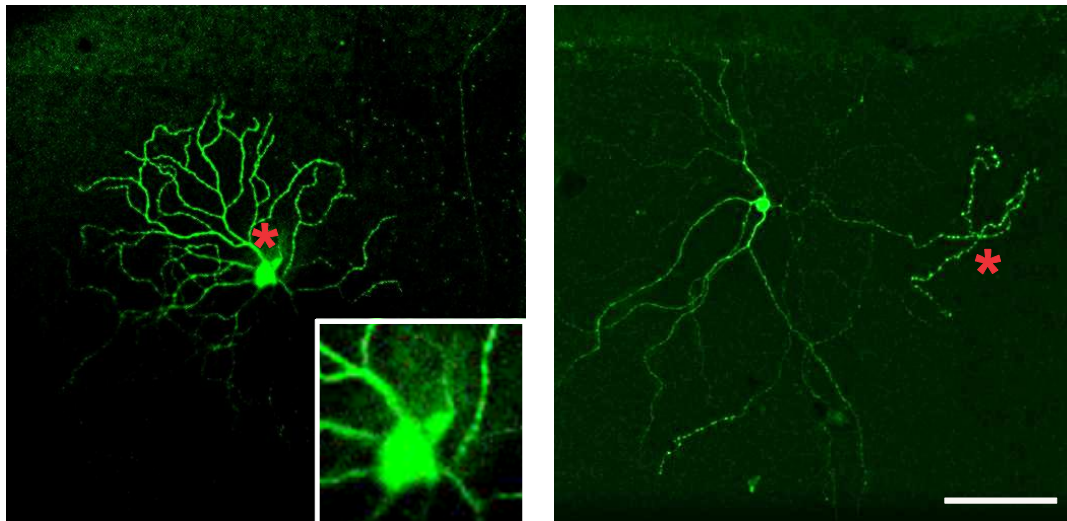


Supplemental Figure 1



Supplemental Figure 2

Supplemental Figures

Suppl-Figure 1. Retinal sections immuno-stained by DAPI showed that the overall morphology of retinas at 1-hour and 1-day after laser treatment was largely normal compared to controls. Scale bar: 100 μm . ONL: outer nuclear layer; INL: inner nuclear layer; GCL: ganglion cell layer.

Suppl-Figure 2. Two examples of RGCs with abnormal dendritic morphology in hypertensive eyes. The RGC on the left had a primary dendrite with only proximal segments, and right showed a RGC with contorted dendrites that seemed to loop and fold back (red stars). Scale bar: 100 μm .