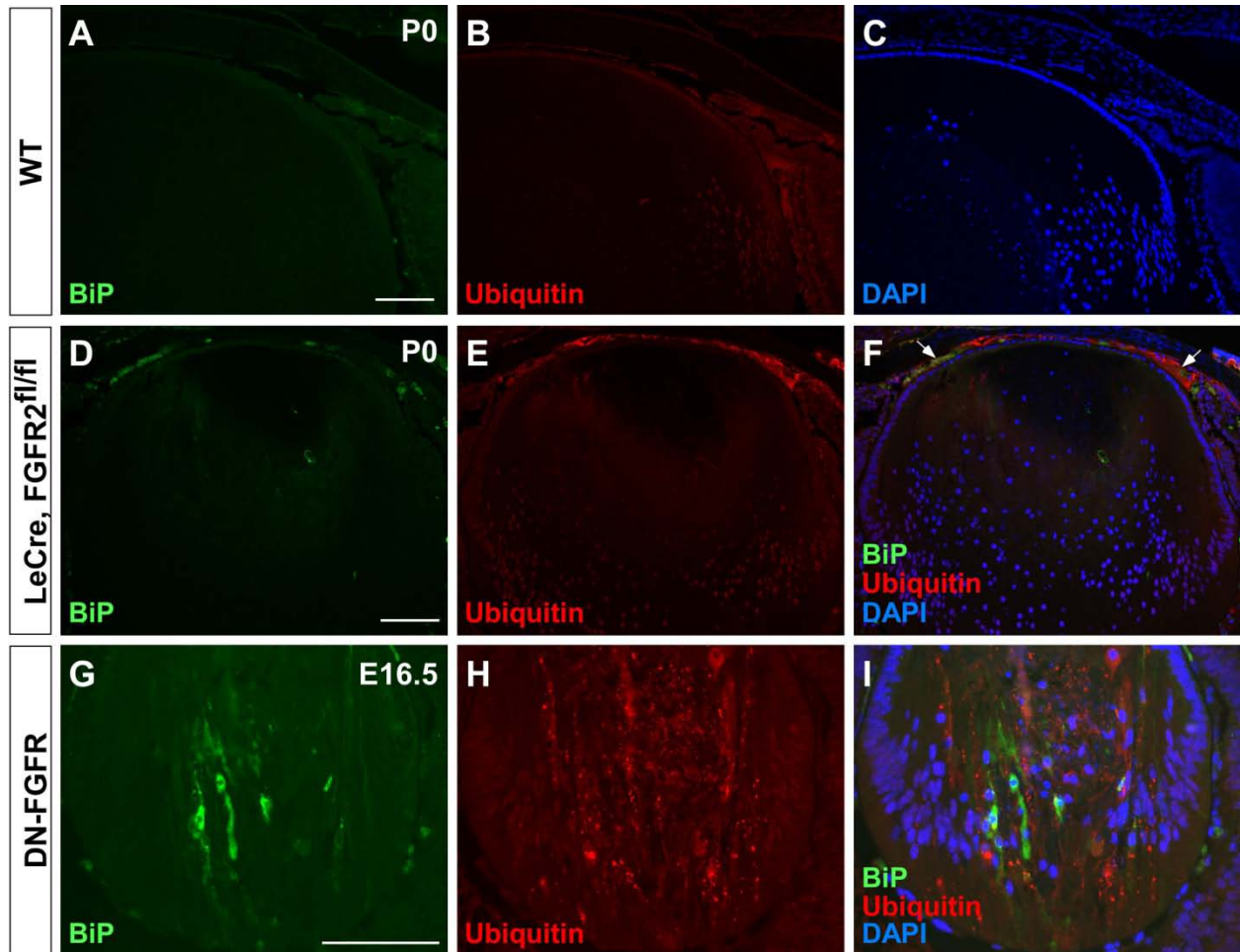


## Supplemental Data



**Figure S1. BiP and ubiquitin immunofluorescence in the mouse lenses.** BiP level was very low in the P0 WT (A) and FGFR2 conditional knock out (LeCre, FGFR2<sup>fl/fl</sup>) lens (D, F). In contrast, BiP was upregulated in the E16.5 DN-FGFR lens (G, I). A low level of ubiquitin was found in the lens epithelial layer and fiber cell nuclei in the WT (B) and FGFR2-deficient lens (E, F). Intense ubiquitin-positive protein aggregates were found in the cytoplasm of the DN-FGFR lens (H, I).